

Carroll County Fact Sheet

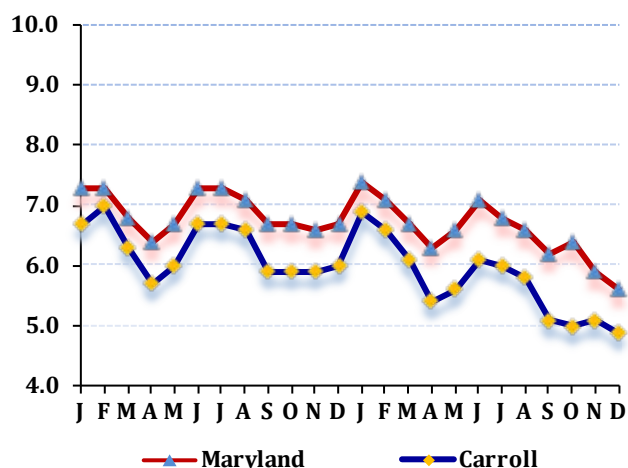
LABOR FORCE STATUS 2012-2013*

Annual Averages

	2012	2013	Change
Labor Force	94,531	94,603	72
Employment	88,603	89,186	583
Unemployment	5,928	5,417	-511
Unemployment Rate	6.3	5.7	-0.6
Maryland Rate	6.9	6.6	-0.3

--Not Seasonally Adjusted

UNEMPLOYMENT TRENDS - Jan. 2012-Dec. 2013*



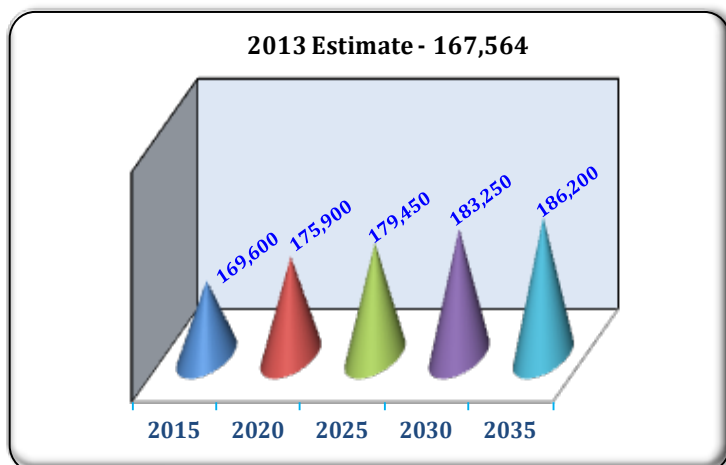
EMPLOYMENT BY SECTOR - 2013 ANNUAL*

Sector	Employment
Total Employment	56,144
Government Total	8,301
Federal	270
State	1,345
Local	6,686
Private Sector Total	47,843
Natural Resources & Mining	405
Construction	5,101
Manufacturing	4,052
Trade, Transportation, & Utilities	11,290
Information	434
Financial Activities	1,593
Professional & Business Services	6,561
Education & Health Services	9,563
Leisure & Hospitality	6,558
Other Services/Unclassified	2,286

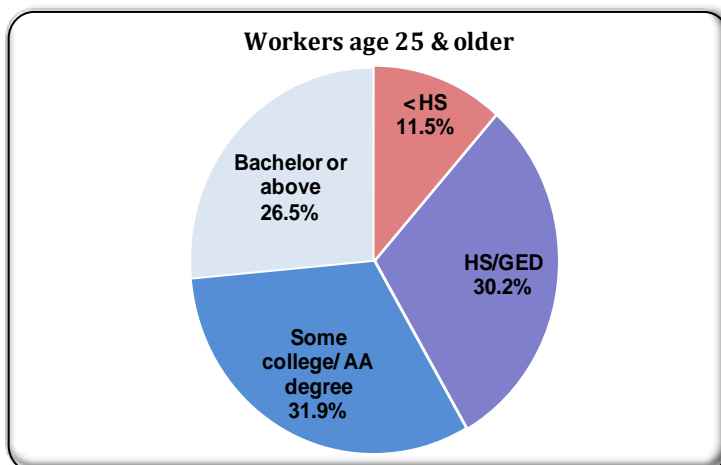
PRIVATE SECTOR GROWTH - Jan. 2012-Dec. 2013*

Industry	Growth
Food services and drinking places	137
Amusements, gambling, and recreation	133
Ambulatory health care services	124
Furniture and home furnishings stores	113
Real estate	70
Specialty trade contractors	51
Repair and maintenance	51
Administrative and support services	47
Waste management and remediation services	41
Wood product manufacturing	40

POPULATION: 2010 CENSUS & PROJECTIONS ***



WORKFORCE BY EDUCATION LEVEL - 2013Q2**



Sources: *Maryland Department of Labor, Licensing and Regulation **U.S. Census Bureau *** Maryland State Data Center

Martin O'Malley, Governor

Anthony G. Brown, Lt. Governor

Leonard J. Howie III, Secretary

Division of Workforce Development and Adult Learning, Office of Workforce Information and Performance, August 2014